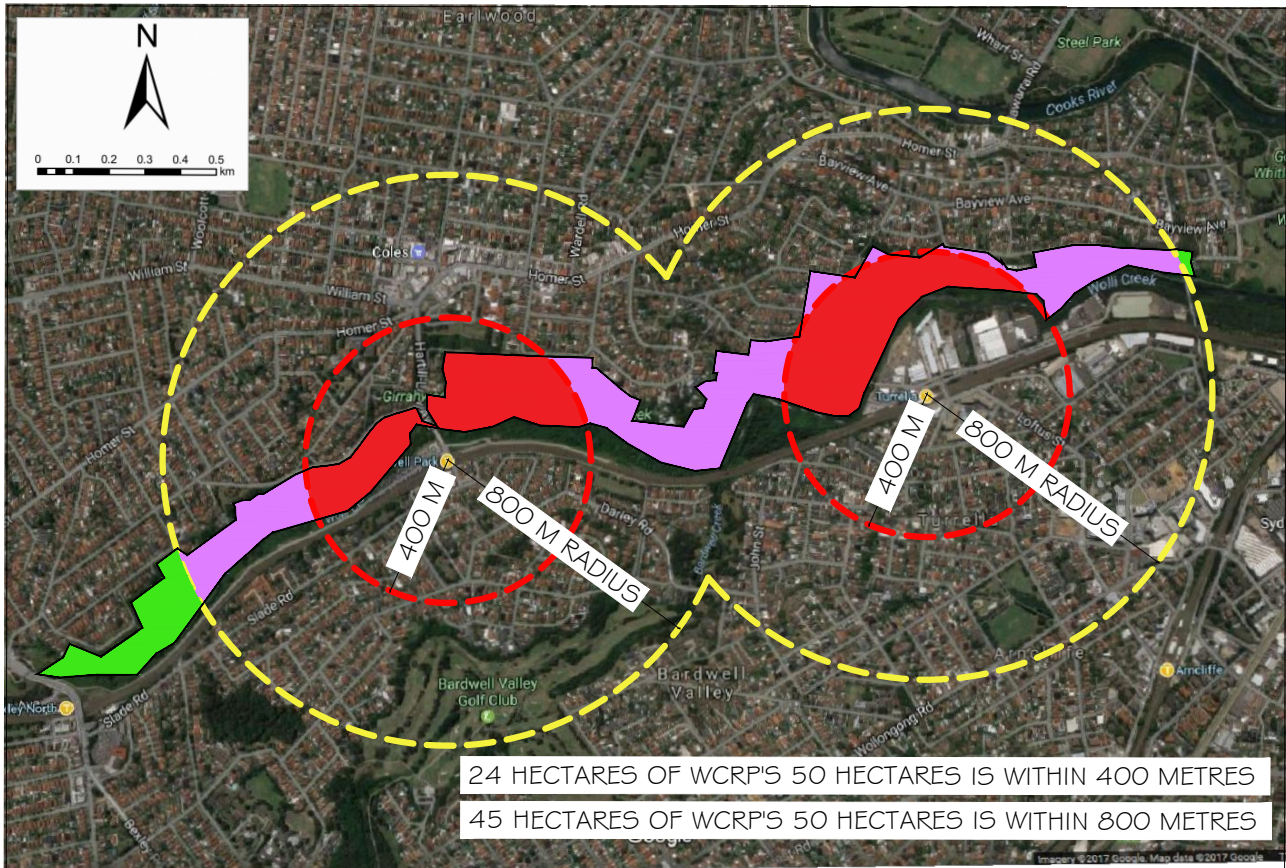


Turrella, Bardwell Park, & Earlwood

Public Meeting re Priority Precinct proposal

**The Wollie Creek Preservation Society invites you to an open meeting
7-8.30 pm Mon July 17 at CECAL, Lewins St, Earlwood (opp. Coles carpark)**

A meeting to air and share community concerns about impacts



Walking distances to Bardwell Park and Turrella Stations - areas Government says potential high-rise development; these include most of Wollie Creek Regional Park

ACTIONS TO TAKE

- 1. COME to the public meeting; pls let us know you are coming, email info@wollicreek.org.au**
- 2. GO to the Planning Dept's revised drop-in information session: Monday 24th July from 4.30-7.30 pm, Rockdale Library**
- 3. CONTACT your NSW MP with your concerns:**
Rockdale, Steve Kamper (ALP) rockdale@parliament.nsw.gov.au
Kogarah, Chris Minns (ALP) kogarah@parliament.nsw.gov.au
Canterbury, Sophie Cotsis (ALP) canterbury@parliament.nsw.gov.au
- 4. JOIN WCPS via www.wollicreek.org.au**
- 5. FOLLOW ProtectWollieCreekValley & Earlwood2206 on Facebook for ongoing information and discussion.**