

Wolli Creek Update

FROM THE WOLLI CREEK PRESERVATION SOCIETY INC.

APRIL, 1997

Wolli walks in Heritage Week

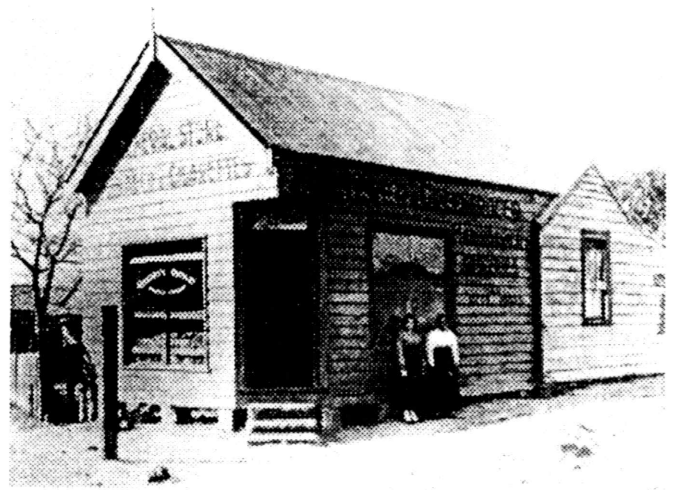
Heritage week (April 20 to 27) has arrived and the theme for 1997 is *Culture Down Under*. What better way to celebrate than to go for a walk through our own valley on Sunday 27; or take a walk through Turrella to look at some of the historic houses in that area. 'Forsyth', probably the best known of these houses was built by Samuel Jeeves from local sandstone in 1879-80. Meet at ...

■ **Tempe station** in the car park at 10 am for a walk through the valley, or at ...

■ **Turrella station** at 10.30 am for a historic walk through Turrella.

Both walks finish at Girrahween Park. Bring a picnic lunch and we will provide a cup of tea. At Girrahween Park there will be some of the traditional games for the children, three legged race, sack race, marbles and chopsticks, the parachute, and others. Come along and make it a family occasion.

■ **RIGHT:** Brown's store, Turrella, photographed early this century.



Wolli water quality initiative

The Cooks River has enjoyed some recent publicity. Recently described in the *Sydney Morning Herald* as City's most unloved waterway, the article briefly discussed the reasons for the Cooks River's terrible contamination. A plan to rescue the river has been produced by a working party made up of Canterbury, Marrickville and Strathfield councils, the Department of Land and Water Conservation, the Cooks River Catchment Management Committee, Greening Australia and the Environment Protection Authority.

Joining in this battle to rescue the river are the children from Undercliffe School who are testing water quality in Wolli Creek. (See **box story**).

Their teacher, when at Ferncourt School, joined in the Preservation Society's *Images of Wolli Creek* competition in 1990 and his year 5 class won an award for a wonderful decorated map of the Wolli Valley. It's great to see teachers using the valley as a classroom.

In the *St George & Sutherland Leader* in July last year there was an article titled 'New Wolli Valley regional park soon'. It heralded a 56 hectare new park for the valley, involving the amalgamation of 12 parcels of land (controlled mostly by different government authorities) stretching from Turrella to Bexley North.

The announcement followed a deputation by the Wolli Creek Preservation Society, the National Trust and the Total Environment Centre to the Minister for the Environment, Pam Allan.

The Wolli Valley regional park would be managed by the National Parks and Wildlife Service, finally guaranteeing the protection of the valley's open space and creating a permanent recreational and educational resource for South-Western Sydney.

However the Preservation Society is un-

Bug-eyed students from Undercliffe

Each year in Spring and Autumn across the state of NSW thousands of students don gloves, boots and arm themselves with nets, small brushes, ice-cube containers and tweezers, and head for the nearest waterway. The Year 4 students at Undercliffe Public School were well prepared in the classroom for the activity which lay ahead.

Led by class teacher Mr Nadile and principle Mr Murray they headed down to the Wolli Creek causeway near Turrella station. They were hoping to find very sensitive waterbugs which would indicate a clean waterway. However they found some 'sensitive' and some 'tolerant' water-bugs which indicated water quality to be in the 'fair' range according to a table prepared by the Streamwatch committee.

The children were enthusiastic in their approach and are keen to help clear our waterways and prevent them from further stormwater pollution. The experience beyond the classroom walls has been extremely beneficial and Year 4 is looking forward to the next bug survey which will take place later this year in Spring.

• SAM NADILE
Undercliffe Public School

happy with the rate of progress towards the declaration of the park and has requested more information from the Minister for the Environment. We shall inform you of the minister's response.

Preservation Society gets behind Save Sydney campaign

On the motorway front, the Society continues to oppose the government's M5 East

and Eastern Distributor proposals. We are pleased to see that at last all relevant government departments have made submissions to the EIS process which are highly critical of, if not completely in opposition to, these motorways. It remains to be seen whether the Minister for Planning, Craig Knowles, will heed this advice.

Air pollution levels have been up over recent days and actually reached a high of 72 in the East on Sunday 13 April. Such high levels (visible as a fine brown veil low in the sky) make the building of two new motorways with the increased traffic that will result completely reprehensible.

A 'Save Sydney' campaign, backed by the major environment groups is currently being waged. Its priority target is the RTA's M5E and Eastern Distributor plan. The first meeting, at Earlwood, attracted 80 people and the second, at Sydney Town Hall, was attended by 1000 concerned citizens. Speakers, including Jeff Angel, Clover Moore and Ian Cohen, and our former president, Gavin Gatenby, in his new role as president of Transport Action Group reminded us of Carr's pre-election promise to call a moratorium on road building. Watch for information advertising further Save Sydney campaign meetings.

The New Southern Railway is well under way and we have all watched with interest the work on the southern section of the tunnel from the Cooks River to the East Hills Line. Transfield Bouyges are happy to conduct small groups around different construction sites on week-end and if you'd like to join a tour, probably of the new Wolli Creek Interchange station at North Ameliffe, give Lee Hoffmann a ring on 9567 8502.

■ Preservation Society are held on the first Wednesday of each month at 7.30 pm at the Community Development Organisation offices, 11-13 Hartill-Law Avenue, Bardwell Park.