

Wolli Creek Preservation Society

# Update

June 2014

[www.wollicreek.org.au](http://www.wollicreek.org.au)



## TREE-MENDOUS WOLLI

LEARN ABOUT THE THREAT TO THE WOLLI VALLEY'S TREES AND BUSHLAND FROM M5E/WESTCONNEX AND JOIN US FOR A VARIETY OF ACTIVITIES.

- 1** FIRST, take an easy 10 minute walk through the threatened bushland:
- be surprised and inspired by music, installations, artists and bush regenerators at work
  - place an image along the track
  - learn a plant name
  - hang your favourite poem (BYO) about nature or a protest about bushland destruction.

- 2** THEN join us at Illoura Reserve for:
- light refreshments
  - more music and art
  - information stalls about WestConnex and alternatives
  - activities for kids – young and old.

- 3** AND then you can also:
- Pledge support to save this wonderful place from destruction
  - Join WCPS & help us preserve the bushland for future generations.
  - Join community opposition to West Connex via NoW Public Transport and associated groups
  - Register for our National Tree Day planting at Illoura Reserve (on Sunday 28th July from 10 am).
  - Bring a picnic and stay for lunch.

Come and show your support for the campaign to SAVE THE WOLLI VALLEY'S TREES AND BUSHLAND from the M5E/WestConnex project, by coming to TREE-MENDOUS WOLLI.

Sunday 20 July 2014  
10.00am – 1.30pm  
Western Gateway bushland  
at Bexley North



Wolli Creek Preservation Society  
E [info@wolli.org.au](mailto:info@wolli.org.au)  
T 0431 914 553



# FAST TRACKED WESTCONNEX NOW URGENT THREAT TO OUR BUSH



This postcard aimed at then Premier O'Farrell shows some of the beauty of the bushland section under threat of destruction – everything in the photo would go, even the rocks, for the initial section of the tunnel. Sophie would be saved, but devastated!

May's Federal Budget brought more bad news to those of us who value the Wolli bushland and wish to preserve it for current and future generations. The Federal Government is providing a \$2 billion loan to the NSW Government to fast track the duplication of the M5 East as part of the WestConnex project.

Unless the community makes its opposition to this proposed toll way known, the loan could mean that the bulldozing of the 'Western Gateway' end of Wolli Creek starts

as early as next year. This two hectare area of the Valley between Bexley Road and Illoura Reserve is filled with 1500 significant trees and many shrubs and wildflowers, Depression-era settler remnants and precious bushland.

The Society opposes the WestConnex for a great number of reasons, not least because the business case for the project has not been reasonably demonstrated by the State Government, which continues to avoid releasing

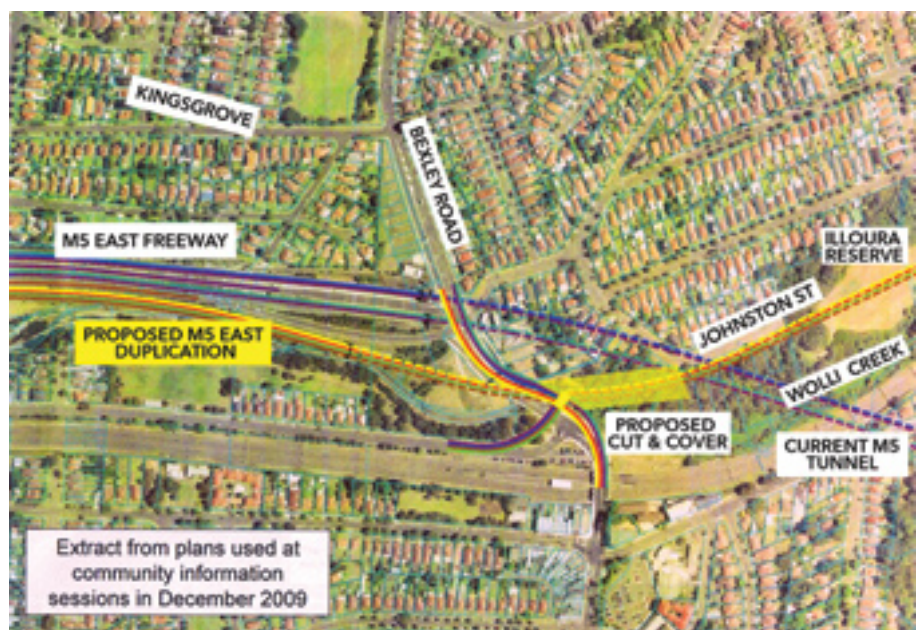
important information on it.

We urge Wolli Creek supporters to take the threat to our bushland seriously. Help our campaign to fight this short-sighted, misguided and misdirected infrastructure project which will destroy a beautiful part of our Valley.

Find out more by signing up for updates at [westconnex.info](http://westconnex.info) or like the campaign Facebook page No Westconnex: Public transport not motorways.

ANNA LE MASURIER

The most recently published RMS vision of the route of the new M5E through Wolli. The section to Johnston St would mean a cut-and-cover tunnel removing everything, even the rocks. Associated works would pretty much guarantee the destruction of the rest of the section to Illoura Reserve.



## CLEAN UP AUSTRALIA DAY, OLD BOWEN'S CAMP, SUNDAY MARCH 2

25 volunteers, both big and small, worked together with a lot of enthusiasm to clean up Bowen's Heritage Site. The equivalent of 52 bags of rubbish were removed from the area: 19 bags of recyclables, mostly plastic drink bottles, 26 bags of rubbish and lots of loose rubbish, equivalent to another 7 bags. This adds up to about 180kg in all.

Apart from the myriad plastic bottles, which made up the bulk of the loot, we also removed an old beanbag, a big toy car, two syringes, oodles of cigarette lighters and balls in all shapes and sizes. The site is due for an archaeological survey this year and with all the rubbish out of the way, the archaeologist's work will be a lot easier now.

*A big THANK YOU to everybody for all the hard work and to our "tea ladies" who provided us with very welcome refreshments including some really yummy cakes.*

UTE FOSTER



CLEAN UP AUSTRALIA DAY 2014

## Annual Dinner



DR. RICHARD MAJOR

### FRIDAY 17 OCTOBER

Our speaker this year will be Dr. Richard Major, ornithologist and bird expert at the Australian Museum. His research projects focus on the effects of urbanization on different bird species, such as the White-fronted Chat, currently missing from Wolli's saltmarsh areas, but present at Sydney Olympic Park and Towra Point.

He's also very involved in Birds in Backyards. Recently he has been involved in the popular Cockatoo Wingtag cockatoo tracking project using wing tags and citizen enthusiasm to monitor the habits of Sydney's urban White Cockatoo population.

See more about him at: [www.australianmuseum.net.au/staff/richard-major](http://www.australianmuseum.net.au/staff/richard-major)





# Bat Watch in March

About 60 adults and 26 children brought blankets and picnic dinners to Turrella Reserve to have fun at an unusual social evening in March organised by Deb Little

Watching the mass fly out from the Flying-fox camp was like one of the great David Attenborough wildlife experiences, a spectacular natural phenomenon to see in such an urban environment.

The atmosphere was easy and friendly and WCPS bat counters and WIRES bat carers were happy to answer any questions. The children had a great time playing in the park, shining their torches in the dark, making their own 'crafty' bats and watching the FF's as they streamed out over the Reserve. Everyone had a great night!

## *Good Bat News*

The Society, in partnership with Rockdale City Council and RailCorp (now Sydney Trains), has been successful in gaining funding from the NSW Environmental Trust for a Management Plan for the Flying-fox camp in the Valley at Turrella. A Management Plan is an important document to guide, among other things, on-ground actions to ensure the roosting habitat there remains in a sustainable condition.

This vulnerable, listed species is a crucial spreader of native plant pollen and seeds. It's estimated that 50 % of flying-foxes habitat has disappeared since European settlement and increasingly, urban camps such as the one in Wolli are becoming important for the survival of the species.

Monthly fly-out population counts (started in April 2008) continue, with a good roll up of counters at each count. 16,000 flying-foxes were recently counted.

DEB LITTLE



SANDI & SEREN BREUER

# KAYAKING TRIP

## Wolli Creek to Crest

11 OCTOBER & 8 NOVEMBER

Organised and led by the River Canoe Club & the Wolli Creek Preservation Society, this popular tour will last for approximately 4 hours, including a kayaking induction and safety briefing and about 1 hour of relaxed paddling UP Wolli Creek to the Henderson St weir. This is followed by a tour around Turrella Reserve, where many environmental improvements

are happening, a visit to the Flying-fox camp and a walk up Nanny Goat Hill, all with commentary. Then a leisurely paddle back DOWN Wolli Creek ends in a cuppa and/or a bowl of hearty soup at the River Canoe Club.

Book soon, because these popular trips fill up very quickly.

## Wolli Blog

Published author Louise Egerton recently walked through the Valley and loved what she saw.

You might like to read her blog, *Wolli Creek: a Precious Place*, <http://wildiaries.com/trips/11274-Wolli-Creek-a-Precious-Place>

## Full Valley Walk – Free to Members, 9th August

This enlightening walk takes 4.5 hours to cover the 4.5 km from Bexley North to Tempe. It's full of information about the valley, things to be seen along the way, current bushcare work going on and issues affecting the bushland. It's free to members and we encourage all recently joined members to come and get a wide background briefing on the valley. We welcome others as well. They can just sign up to join as part of the process. Get friends and neighbours to come along too. Numbers are limited, so it's essential to register in advance. We generally can't take anyone who hasn't.



WESTERN END WOLLI BUSHLAND, PHOTO JOHN DAVID

## FUNGI FORAY



The joint WCPS and Sydney Fungal Studies Group Fungi Foray on 8th March had about 25 participants. The group split into two, so that as much of the park as possible could be covered in the two hours of collecting.

With some recent rain and many eager scouts, a good variety of specimens were found. These included the

large *Phlebopus marginatus* which is probably Australia's largest terrestrial fungus, the brown ear-like *Auricularia auricula-judae*, and large number of *Coprinus comatus*, in all stages of growth from the immature long conical cap to the bell shaped cap and to the auto-digesting stage. July 12 is the date for the next foray.



# In the Valley...

## Autumn Bird Migrations



**Yellow-faced Honeyeater**

**Yellow-tailed Black Cockatoo**

Autumn marked the return of regular annual flocks of small birds migrating northwards from their summer holidays in Tassie and Victoria. The Silvereyes and New Holland Honeyeaters have returned in good numbers and large flocks of Yellow-faced Honey-Eaters were flying high overhead down the valley for several weeks.

The mournful cry of the Yellow-Tailed Black Cockatoo is always a sure sign that winter has finally arrived. A flock of about forty cheeky noisy birds has been making itself at home in the valley. Quite a few Eastern Spinebills have been sighted throughout the Valley as well.





Belinda Pittard spotted this unusual visitor in the Bardwell Valley Parklands.



**Female Satin Bowerbird**

Calum Duffy, budding bird photographer from Port Jackson Place, also took this photo of an immature Golden Whistler in the family backyard.



**Golden Whistler**

Historically, Eastern Spinebills have been resident in the Valley since the first available records. Alfred North recorded them at Kingsgrove in the 1890s. By the late 1990s it certainly seemed they were present less often - as were some other once-common species, including the Eastern Yellow Robin. This seemed to mirror the decline of these species across Sydney. So it's good to hear they may be making a comeback.



**Eastern Spinebill** (photo CALLUM DUFFY)

## DEVELOPMENT TO KEEP AN EYE ON

A Development Application has been made to Canterbury Council to re-subdivide an existing four-block area between Bayview Avenue and Highcliff Road Earlwood to create six blocks. Current indications are that an additional five residences will be the subject of subsequent DAs.

Because the area is adjacent to the bush above the Undercliffe Track, this needs to be carefully monitored. WCPS is making a submission about the DA, with which there are already concerns about both removal and retention of vegetation, fire issues and stormwater discharge. Contact WCPS for a copy of the submission.



PHOTO BY LAURA ZUSTERS

Pretty *Lobelia Dentata* flowering near Wolli Bluff.

## CALENDAR

**Bush regeneration:** Jul 5, 9, 13, 18, 19, 26. Aug 2, 10, 13, 15, 16, 23. Sep 6, 10, 14, 19, 20, 27. Details of locations from WCPS or website calendar, or email [bushcare@wollicreek.org.au](mailto:bushcare@wollicreek.org.au) Always check in case of changes at short notice

**Bat counting:** Third Friday of each month, just after sunset. Come along to see the fly-out or join in the counting. For up-to-date details, join the bat group email list by contacting [bats@wollicreek.org.au](mailto:bats@wollicreek.org.au) and come along to see the fly-out or join in the counting

**Bird surveys:** Ten teams are doing regular monthly surveys of bird species and numbers present. They work to their own timetable, but we can get you involved on a team if you contact WCPS.

**Committee Meetings:** July 30, Aug 27, Sep 24. Inner south-west CDO, suite 1, Ground Floor, 11-13 Hartill-Law Avenue Bardwell Park. Meetings start at 7.30pm. All members are welcome to attend the meetings, notification to WCPS essential due to security at the building.

**Sunday 20 July – Tree-mendous Wolli.** See page 1 in this Update for more details.

**Sunday 27 July – Community Planting on Illoura Reserve.** 10-12ish with sausage sizzle to follow. Please register with WCPS in advance.

**Sunday 9 August - Walk the Wolli Track.** With environmental and historical commentary along the Wolli Track from Bexley North to Wolli Bluff above Waterworth Park. For details of the walk see p5. Allow about 4.5 hours. Contact WCPS to register

**Kayak trips:** Saturday October 11 and Saturday November 8 Wolli Creek to Crest. Always very popular, so you need to register early with WCPS to ensure your place. Cost is \$40 to members.

**Annual Dinner:** Friday 17 October. Pencil in this important date; for this year's speaker see p3 - other details in the September Update. Register early to ensure a place.

**To register:**

**E** [info@wollicreek.org.au](mailto:info@wollicreek.org.au) or **T** 0431 914 553

**Wolli Creek Preservation Society**

PO Box 270 Earlwood NSW 2208

**T** 02 9554 3178 **E** [info@wollicreek.org.au](mailto:info@wollicreek.org.au)

[www.wollicreek.org.au](http://www.wollicreek.org.au)

<http://twitter.com/wollipossum>

[www.facebook.com/protectwollicreekvalley](http://www.facebook.com/protectwollicreekvalley)

[www.youtube.com/wollicreekvalley](http://www.youtube.com/wollicreekvalley)

