



Wolli Creek Preservation Society

Update

June 2017

wollicreek.org.au

CELEBRATING NANNYGOAT HILL

ORGANIZER JUDY FINLASON REPORTS:

The celebration of the 50th Anniversary of the Battle for Nannygoat Hill on Sunday was a great success, thanks to the contribution of many people. The weather was perfect and Turrella Reserve looked magnificent.

A big thank you to everyone who took part in a variety of ways – running activities and information stalls, baking goodies, lending marquees and equipment, publicizing the event or coming along to enjoy the day.

Volunteers at the Turrella Tea House were kept busy serving delicious cakes and bikkies supplied by WCPS members. The vintage teacups, kindly lent by Ferncourt P&C, gave the occasion a touch of class.

Chairs lent by Reverse Garbage meant everyone could sit and relax while having a cuppa and a chat. Donations were generous with many hundreds of dollars raised at the Turrella Tea House and elsewhere.

Continued on page 2



Photos Laura Zusters



ABC reporter Phillipa McDonald filmed on the day and the story ran on Sunday night's news. See it on our [youtube channel](#).

Photos of the event are online: www.flickr.com/photos/wolli_events/albums

CELEBRATING NANNYGOAT HILL

Continued from page 1

There were plenty of things for children to do, with old fashioned games like hop-scotch, egg & spoon and sack races. Kite-making proved popular, as always. Reverse Garbage organized a variety of crafts with a '60s theme. Information was available about WCPS activities, Wolli Birdos and the history and ecology of the valley.

Musician Sue Gee performed with members of the group Ecopella and sang "The Battle for Nannygoat Hill", the song she composed especially for the occasion.

Viewing of the ABC's "This Day Tonight" 1967 story of the original walk up Nannygoat Hill was popular, particularly with relatives of the original protesters who shared their memories with us.

About 60 people, many dressed in 1960s vintage outfits, took part in the re-enactment walk and climbed the rocky slopes of Nannygoat Hill to celebrate the residents' action of 50 years ago and to claim the hill as a significant feature of Wolli Regional Park.

Congratulations to everyone on a successful Nannygoat Hill celebration.

Judy Finlason



Photo Abi Curtis



Photo Abi Curtis



Photo Voren O'Brien



Photo Abi Curtis



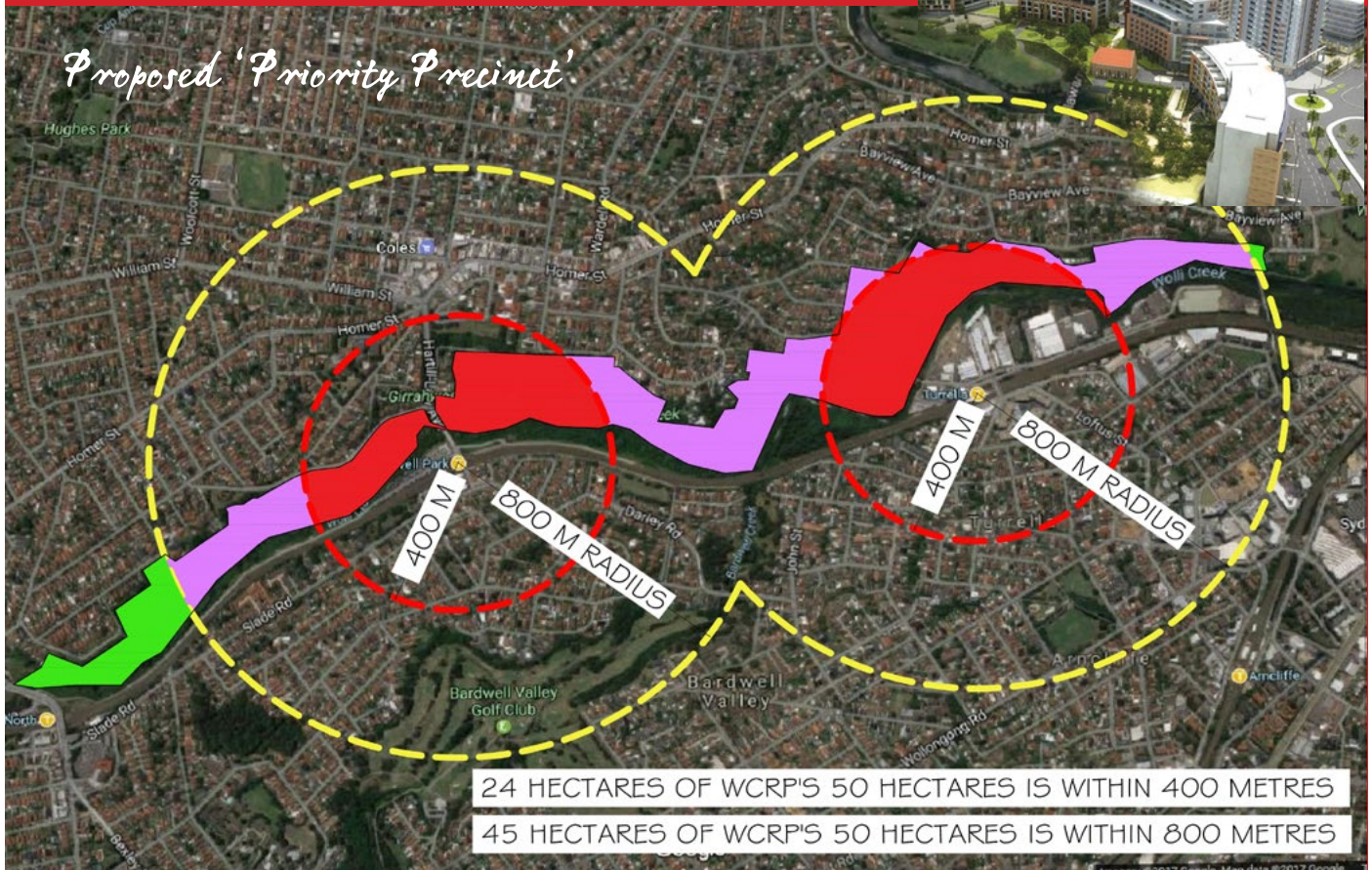
Photo Voren O'Brien



Photo Voren O'Brien

A big thank you to Judy for masterminding this great event

WANT TURRELLA AND BARDWELL PARK FULL OF HIGHRISE TOWERS AND TRAFFIC, SO CLOSE TO THE REGIONAL PARK??



BE SURE TO ATTEND THE "RESIDENTS CONSULTATION"

Run by the NSW Dept of Planning and Environment

MONDAY 24TH JULY, 4:30PM-7:30PM

ROCKDALE LIBRARY, 444/446 PRINCES HWY, ROCKDALE

Proposals by the Department of Planning would see high-rise development given open season in Earlwood, Bardwell Park and Turrella under proposals to make the areas around the two stations a "Priority Precinct". As shown in the map, the Precinct covers almost all of the Wolli Creek Regional Park, nearing completion after 25 years. The Precinct is labelled Bardwell Park and Turrella although large areas of Earlwood are also included.

Based on past history, we must do all we can to pressure the Department of Planning to undertake meaningful community consultation, and pay attention to all implications of increased housing/population density as well as paying attention to the preferences of current residents. If the "Priority Precinct" goes ahead we may be able to influence the imposition of strict measures to help protect the bushland, waterways, birds and animals that live along the creek. In addition to the way people use the area, with the bushland likely to be under increased pressure by an increased population, there are issues such as sewage and pollutants in storm water which will need to be addressed.

As we learn more about the proposal, we will provide that information to members. Watch your email or our facebook page for updates and ideas of things you can do to ensure your voice is heard. Let us know if you are able to assist the Society in our response to the proposal.

To see what the NSW Department of Planning and Environment has to say, see www.planning.nsw.gov.au/News/2017/New-priority-precincts where you can also complete a survey and use the "Contact Us" link to let them know what you think of their ideas.

OTHER RECENT EVENTS

FRIDAY 10TH MARCH

SUNSET BATWATCH PICNIC

TURRELLA RESERVE



Photo by Laura Zusters

This was our fourth 'watch the bats fly out' picnic held at Turrella Reserve and the second one supported by a NSW Environmental Trust grant and our partners in this grant, Bayside and Canterbury-Bankstown Councils and NPWS.

The bat watch picnics have been held during Australasian Bat Month, and are one of the activities that bat-supportive community groups and agencies hold to raise awareness of the need to conserve our bat species and how to best live along side them.

Over 400 people attended and again those helping with the various bat craft activities and face painting were overwhelmed by clamouring kids. Our bat information stall was also popular, and some myths about Flying-foxes were dispelled.

Flying-fox expert, Peggy Eby, who attended this year, commented on how nice it was for her to watch the reactions - the 'wows' - of some in the crowd who were seeing the fly out of thousands of Flying-foxes for the first time. We call it one of the great urban David Attenborough experiences.

We hope to hold another picnic in 2018 in partnership with NPWS and will probably need even more craft helpers. Bat craft ideas are also welcome.

Deb Little

SAT APRIL 22

DISCOVERY POINT MARKET EARTH DAY STALL at WOLLI CREEK



Photo by Deb Little

Our presence at this market on Earth Day was supported by Bayside Council, who also had a display and information stall about their environmental education projects, including a working and buzzing native stingless bee hive.

This is still a fledgling market, so we were not swamped with visitors, but we had some quality conversations, particularly with local Wolli Creek and Arncliffe residents. Perhaps unsurprisingly, given many residents look over both Wolli Creek and the Cooks River, there was some interest in the kayak trips we run in conjunction with the River Canoe Club.

Many thanks to members Abi, Ann, Debbie, Deb, Dejan, Gina, James, Joanna, Kim, Lana, Leonie and Sharon who staffed the stall during the day. Without a good roster of people such as this it can be a long day.

Deb Little

LINKS TO VIDEOS OF PAST BAT PICNICS
www.wollicreek.org.au/plants_animals/flying_foxes

MORE PHOTOS FROM THIS YEAR'S PICNIC
www.flickr.com/photos/wolli_events/albums



UTE'S GUIDED WALKS THROUGH THE VALLEY

Ute Foster kindly offered a second guided walk along the Wolli Creek Valley on Sunday 23 April for those seven keen walkers who couldn't squeeze into the walk scheduled a few weeks earlier. The group's mix was half members/half non-members.

Along the walk through the valley from Bexley North station through to Tempe station, Ute shared many fascinating stories about the historical and environmental 'battles' that have been hard fought and won in the Valley over the decades.

The walk included many highlights, such as the sandstone foundations of Bowen's Camp and King's Farm, plus the various water treatments, such as storm water Gross Pollutant Traps and sewerage infrastructure in the valley. The Bat Camp, Nannygoat Hill and the historic Jackson Place cottages were highlights, as was a cuppa and more fabulous stories at Judy Finlason's place along the way.

Thanks to Ute and Judy for their time and generous sharing of knowledge and passion for the area.

Abi Curtis

In the Valley...



Exciting find ABANDONED BOWERBIRD NEST



FUNGI FORAY

Ghost Fungus, photo by Deb Little

About 20 adults & 3 children participated in the Fungi Field Study on Saturday 8th April, including about half a dozen WCPS members. Approximately 45 species were recorded on the day, together with a red-bellied black snake that vanished into a hole before any photos could be taken.

Omphalotus nidiformis, also known as the Ghost Fungus, was included in the finds. This fungus is bioluminescent when fresh as it emits light when viewed in the dark. David Noble took it home to capture its glow later that night.

Joanna Robinski



Ghost Fungus, photo by David Noble

PAUL IBBETSON

Recently retired

NSW National Parks and Wildlife Service

While working in the bush to the north east of the Girrahween picnic area below the Sutton/Minnamorra Ave junction in March, I found a bower complete with the carefully curated blue plastic debris typical of a male Satin Bower bird. It looked as though it wasn't being maintained.

There's no mention of that species in Neil Rankin's book, but Justin Cahill has one record of a female sighted in Bardwell Valley Parklands in 2014.

BUSHCARE

Peter Stevens is finally stepping down from being our Bushcare Coordinator from the end of June.

Peter deserves a big thanks for the amazing job he's done over 15 years.

The bushcare groups have felt very supported by his dedication, attention to detail and planning.

Peter says, "I'm ageing, my body is cracking up, I've lost enthusiasm after 15 years in the role and it's simply time to go. I hope that there will be others who can see at least our current grants and contracts through to completion. I still plan to go to some bushcare sessions - but as a participant, not as an organizer."



Pat Thomas Takes Over As
BUSHCARE COORDINATOR

The role will be taken over by Pat Thomas, who recently retired from the National Trust, where she had many years experience overseeing professional bush regeneration teams. Pat has also run the Wolli Bluff and Undercliffe Track bushcare groups for several years. She says, "I'm keen for us to continue to improve Wolli bushland and bushcare is an important part of this."

Pat will take on the central role of organizing the five groups, sending out monthly reminders, ensuring all the different bushcare roles, such as site supervisor and morning tea provider are filled and keeping the toolboxes equipped. But she will need support and will be looking for help from other volunteers to supply morning tea to the bushcare teams and to identify and apply for grants to keep our regeneration work going.

Peter has also been keeping information about volunteer bushcare hours worked in the Valley to supply this info to NPWS and Councils.

We need someone to take on this administrative task. CAN YOU HELP?



BUSHCARE TRAINING

Photo Peter Stevens

Courtesy of a National Parks & Wildlife Service grant, members from WCPS were joined by other local bushcare groups including the Cooks River Mudcrabs, for two days of bushcare training in April and May. These two days provided information on topics such as bush regeneration principles, techniques & tools, weed identification, classification and treatment techniques and provided a good reminder about safety in the bush.

Our first day was an open air classroom at the picnic sheds in Girraween Park. While this was a last minute change, due to problems with accessing the indoor venue, it was a great venue, close to the bush, to learn about about bush regeneration.

Our presenter, Geoff Bakewell, shared his knowledge from many years of bush regeneration which served to increase our enthusiasm and confidence in our bushcare skills.

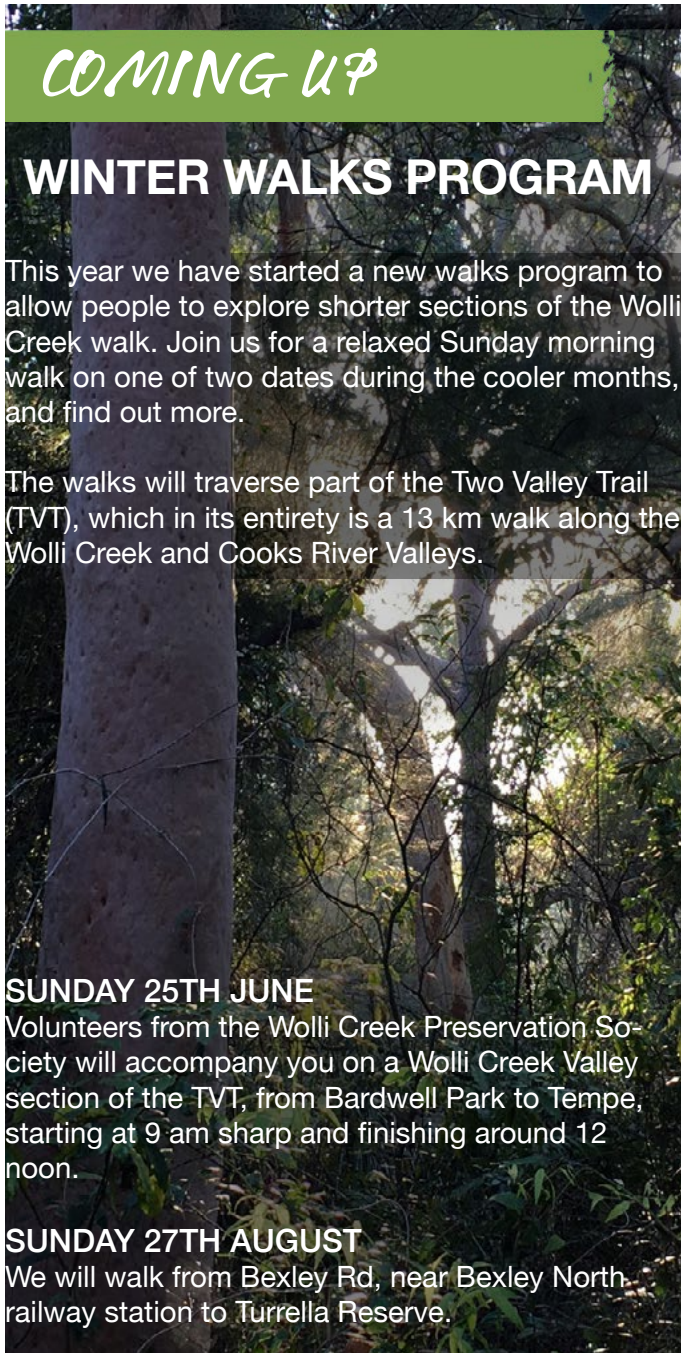
As a relative newcomer to bushcare sessions and as someone with no background in bushcare I was surprised to realize how much I had learned just by being a bushcare volunteer prior to attending this course. This course has allowed me to feel more confident in my knowledge and understanding of bush regeneration techniques.

Gina Svolo



Thanks to Geoff Bakewell, Kim Waterhouse of NPWS and Peter Stevens for organizing this training

Photo Abi Curtis



COMING UP

WINTER WALKS PROGRAM

This year we have started a new walks program to allow people to explore shorter sections of the Wolli Creek walk. Join us for a relaxed Sunday morning walk on one of two dates during the cooler months, and find out more.

The walks will traverse part of the Two Valley Trail (TVT), which in its entirety is a 13 km walk along the Wolli Creek and Cooks River Valleys.

SUNDAY 25TH JUNE
Volunteers from the Wolli Creek Preservation Society will accompany you on a Wolli Creek Valley section of the TVT, from Bardwell Park to Tempe, starting at 9 am sharp and finishing around 12 noon.

SUNDAY 27TH AUGUST
We will walk from Bexley Rd, near Bexley North railway station to Turrella Reserve.



FRIDAY 20TH OCTOBER
30TH ANNUAL DINNER

**GUEST SPEAKER
ASSOC. PROF. DIETER HOCHULI**

The 2017 guest speaker will be Assoc. Prof. Dieter Hochuli, who leads the Integrative Ecology laboratory in Biological Sciences at The University of Sydney. He will speak about insects and associated invertebrates of remnant bushland and their importance. As we don't yet have much information about invertebrates in the Wolli Creek Valley, his talk will no doubt be very interesting.

"The simple facts are that the world is dominated by plants that seem to spend their life interacting in all manner of ways with the most species-rich group of animals on the planet - insects."
sydney.edu.au/science/people/dieter.hochuli.php

My first time at a WCPS dinner I knew about 2 people in the Society and went along a bit nervously. But I found people were friendly and the program was busy enough that I would have enjoyed the evening even if I hadn't talked to anyone. In addition I learnt a lot about the activities of the society and found the guest speaker interesting, so I've kept coming back. I now know lots of people and recommend it to all members.

Book now at \$50 per person by direct deposit to our account: BSB 032067 Account 288295. Please include your surname and "dinner" as identifier and send an email so we know to look for the deposit.

Deb Little, our president and key organizer of the dinner, will again arrange a multi-prize raffle. If you can contribute a prize, or part of a prize, please contact her. She welcomes home-grown fruit and vegetables and homemade jams etc. as well as non-perishable items likely to be of interest to members. I look forward to seeing lots of you at the dinner. Children, friends, and neighbours of members are all welcome.

Deryn Griffiths
Membership Secretary

Registration is essential, and bookings are now being taken. The walks are free to Wolli Creek Society members. Membership is \$10 pa for an individual & \$15 for a family/household. By arrangement, you can join on the day. However numbers are limited, so preference will be given to those who have joined ahead of the day.

To register, email info@wollicreek.org.au
To join the Wolli Creek Preservation Society and for more information about these walks, go to http://www.wollicreek.org.au/about_us/support_us
Details about where to meet will be provided upon registration.

Gina Svolos

MEMBERSHIP

Family One Year \$15
Individual One Year \$10
Concession \$7
Group Membership \$30

Direct Deposit Westpac BSB 032 067
WCPS Inc 288295, with your
SURNAME and RENEW in
the information line

Email membership@wollicreek.org.au to
confirm years and any donation included



ORDER YOUR T-SHIRT NOW

Wearing a WCPS t-shirt is an easy way to promote the Wolli Creek Preservation Society. When a whole family wears them or a group wears them at a working-bee or demonstration, they are very eye-catching.

Still only \$20 per shirt for all styles & sizes

Post the order form available from
www.wollicreek.org.au/about_us/support_us
or Call Deryn on 9591 1828 or
Email deryngriffiths@optusnet.com.au

Direct deposit to our account:
BSB 032 067, account number 288 295
Please include surname and "t_order" as ID
Send us an email with the order details so we
can look out for your payment

We will place a print run in mid-September, or
as soon after that as we have 25 orders.

We will contact you when ready for pick up.

CALENDAR

Bush Regeneration: Jul 1, 9, 12, 14, 15. Aug 5, 9, 13, 18, 19,. Sept 2, 10, 13, 15, 16. Get details of locations via email bushcare@wollicreek.org.au or from WCPS or website calendar, or phone 9554 3176. Always check in case of changes at short notice.

Bat Counting: Generally, third Friday of each month, just after sunset. For up-to-date details, join the bat group email list by contacting bats@wollicreek.org.au and come along to see the fly-out or join in the counting

Bird Surveys: Ten teams are doing regular monthly surveys of bird species and numbers present. They work to their own timetable, but we can get you involved on a team if you contact birds@wollicreek.org.au

Committee Meetings: Jun 26, Jul 24, Aug 28, Sep 25. Inner south-west CDO, suite 1, Ground Floor, 11-13 Hartill-Law avenue Bardwell park. All members are welcome to attend the meetings, but notification to WCPS is essential due to security at the building.

Wolli Winter Walks: Sunday 25 June, from Bardwell Park, 9am sharp, to Tempe. Sunday 27 August, from Bexley Rd (near Bexley North Station) to Turrella (near Turrella Station). Booking essential, contact email info@wollicreek.org.au

Annual Dinner: Friday 20th October, St. George Rowing Club, 1 Levey St, Wolli Creek.

To register info@wollicreek.org.au

Yellow-tailed Black Cockatoos
are back in the Valley for winter



Wolli Creek Preservation Society
PO Box 270 Earlwood NSW 2206
E info@wollicreek.org.au
FB Protect Wolli Creek Valley
www.wollicreek.org.au

