



## Wolli Creek Preservation Society

# Update

September 2019

1. National Parks Sign
2. Spring into Wolli Picnic
3. Annual Dinner
4. Bushcare at Wolli Bluff
5. Protect Wolli Bluff
6. Bat Camp Empty for Winter
7. Biodiversity Month Walks & Kayak Trips
8. Positions Vacant
9. Spring Wildflowers
10. Calendar of Events

## NEW NATIONAL PARKS INTERPRETIVE SIGN AT TURRELLA RESERVE



WCPS volunteers and NPWS/OEH staff who worked together on the project  
Photo: Stacy Wilson (NPWS)

At the end of March, National Parks and Wildlife Service and Office of Environment and Heritage staff organised a thank you morning tea to acknowledge the work of Wolli Creek Preservation Society volunteers who collaborated on the production of a new NPWS interpretive and way-finding panel.

Installed at Turrella Reserve near the start of the Girrahween walking track, this double-sided panel is a great addition to the Regional Park and the first of such signs to be installed by NPWS.

Judging by all the curious Bat Picnic participants who went over to view it after it was installed, it is already playing a great informative and educational role for walkers and other visitors to this section of the Two Valley Trail.

Deb Little

COME CELEBRATE  
NATIONAL BIODIVERSITY MONTH

# SPRING INTO WOLLI

Wolli Creek Preservation Society

SUN 22 SEPT and 26 OCT  
Guided Walks Through the Valley, see page 8

30 NOV and 14 DEC  
Guided Kayak Trips Up Wolli Creek



# Wolli Family Picnic

Sunday 15 September 10-2

Discover the treasures of the Wolli Creek Valley  
Bring a picnic to enjoy with family and friends  
Children's games, craft and other activities  
Short guided nature walks in surrounding bushland  
BBQs and toilet available





Speaker will be Associate Professor Dieter Hochuli

## ANNUAL DINNER FRIDAY 18TH OCTOBER

### The Vital Importance of Insects in Remnant Bushland

At the Scots Club again this year, 29 Burrows Street Arncliffe

**If you haven't booked yet, please put it in your diary and pay now to save the organisers chasing you up closer to the date**

**BOOKINGS VIA EVENTBRITE - WCPS ANNUAL DINNER**

[eventbrite.com.au/e/70103991927](https://eventbrite.com.au/e/70103991927)

This option costs \$65 and includes one year's membership of the WCPS  
If already a member this will extend your membership by another year

**OR**

**Direct deposit: WCPS Inc, BSB 032 067 (Westpac), a/c no 288295**

Please make sure you include your surname and 'ADin' as identifier, and also please send an email to [info@wollicreek.org.au](mailto:info@wollicreek.org.au) so that we are alerted to the deposit. The cost for this option is \$55 for members and \$65 for non members. The non-member price includes one year membership of the WCPS, with attendees to sign up at the dinner.

**Pay by cheque, price as per the direct deposit option**

Cheques should be made out to Wolli Creek Preservation Society Inc. and posted (with a cover note) to PO Box 270, Earlwood, NSW 2206. Please send an email to [info@wollicreek.org.au](mailto:info@wollicreek.org.au) so that we know to expect the cheque.

Visit our website [www.wollicreek.org.au](http://www.wollicreek.org.au) for more details

The Scots Club's new caterer Two Barrels Bistro will include vegan and gluten free options.

Their chef Christopher John Bell was awarded the Chef of the year NSW AHA in 2017. So we look forward to some excellent food on the night.

Dinner will start from 6 pm with pre-dinner drinks available from the cash bar.





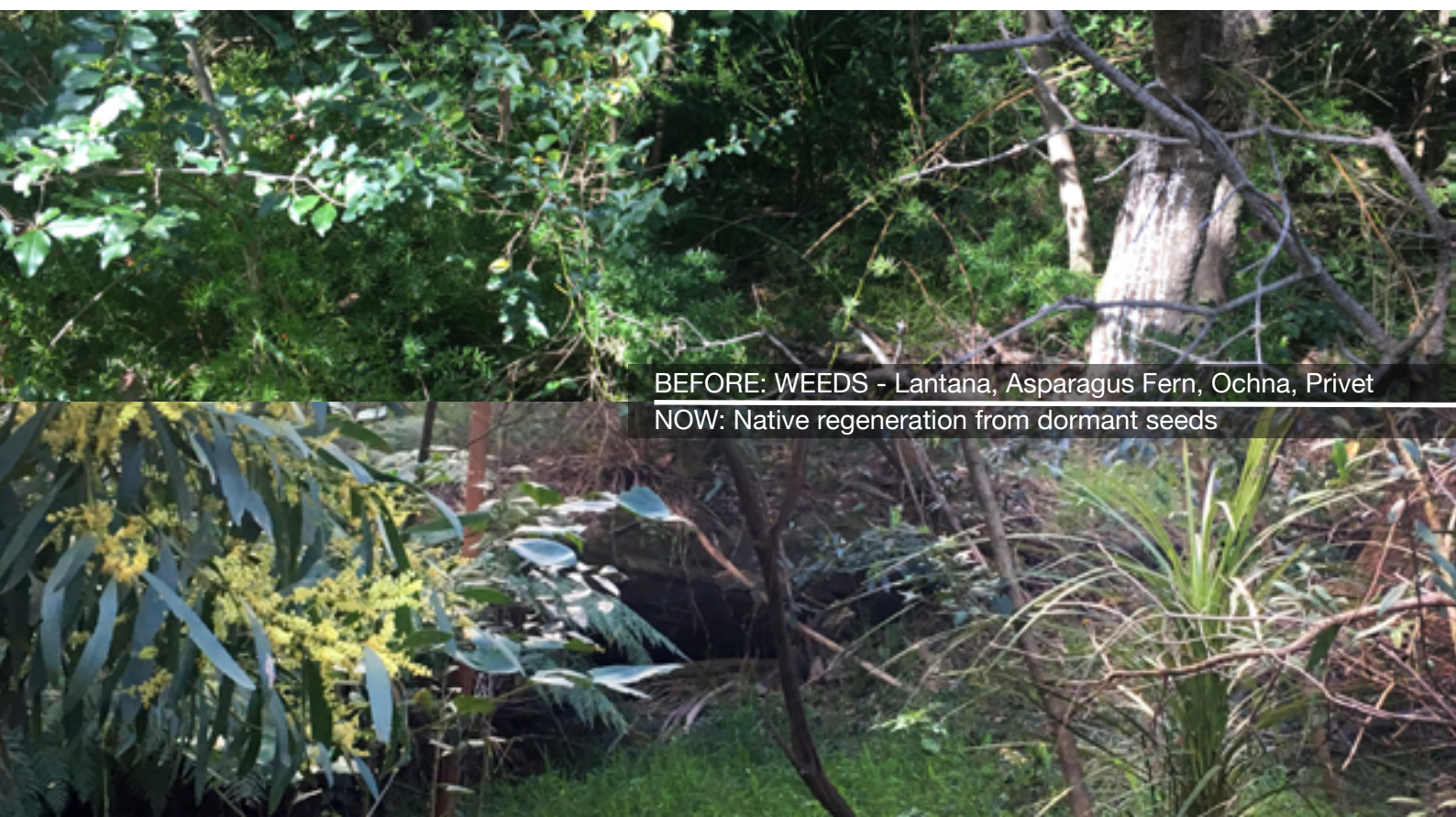
## WCPS VOLUNTEERS HAVE BEEN RESTORING THE BUSHLAND AROUND WOLLI BLUFF FOR MANY YEARS

Pat Thomas leads the Wolli Bluff bushcare team on Saturday mornings once a month. She's dedicated to restoring this special area of bushland.

*"I've been working at this site for over twelve years. In my role as a professional bush regenerator for the National Trust before I retired, I worked at Wolli Bluff under contract supervising the volunteer bushcare team. I've stayed on to keep looking after this bush as a volunteer team leader. It's very special."*

*5 or 6 years ago, the Society applied for a grant to pay a professional team to work on a really degraded site full of Lantana, Ochna and Asparagus Fern below Highcliff St. The regeneration has been fantastic. About 40 species of native plants are now thriving there, plus the team also unearthed old stone walls showing the boundaries of the old farms here. Volunteers now maintain this site and it's a real pleasure to see how healthy and diverse it is now."*

**TO GIVE BUSHCARE A GO CONTACT GEORGINA ON [BUSHCARE@WOLLICREEK.ORG.AU](mailto:BUSHCARE@WOLLICREEK.ORG.AU)**



**BEFORE: WEEDS - Lantana, Asparagus Fern, Ochna, Privet**  
**NOW: Native regeneration from dormant seeds**



Ute weeding on a cliff



Pat shows Michael how it's done



Wolli Bluff

If you haven't been to the Eastern end of the Valley lately, come and walk the track near beautiful Wolli Bluff, with some of the best native vegetation in the Valley!  
But the Bluff could be damaged. See the following story.

Ute Foster is an experienced regenerator at this site and others.

*"Removing the weeds that were choking the native plants gives the natives a fighting chance to regenerate. The majority of plants here have come back from seeds that were waiting in the soil for the right conditions. Today I've seen Greenhood Orchids, Pandorea in flower, lots of Wattles, Epacris and Zieria. Beautiful! Come and have a look."*

Gina, our President, is giving different sites a go.

*"This is only the second time I'm doing bushcare at this site. The great thing about bushcare is you get time to slow down and really appreciate how beautiful the bush in the Valley is. Especially at this end of the Valley, the rocky outcrops are fantastic! And Wolli Bluff forms such a great eastern entrance to the Regional Park."*



The affected area of Wolli Bluff  
at start of the walking track

# WE NEED YOUR HELP TO PROTECT WOLLI BLUFF



## Proposed Odor Control Unit

Track and OCU locations are approximate

Two Valley Trail

OCU location proposed by Sydney Water

OCU location suggested by WCPS

WCPS has written to the Minister for Water, Property and Housing, Ms Melinda Pavey, regarding the planned installation of an odour control unit (OCU) at the Tempe end of the Wollibuff Creek Valley walking track. The OCU will treat gases emanating from the adjacent South-West Ocean Outfall Sewer (SWOOS). The OCU is expected to comprise two large vertical tanks through which the gases will pass and significant associated pipework. It would need to sit on a concrete slab projected to be 13m x 14m.

### We're concerned the proposed OCU will have a negative impact on the Wollibuff Creek Valley track

- Extensive cutting into the rock base of Wollibuff Bluff would mar its natural formation and destroy a fair bit of restored native bushland vegetation. For many years WCPS volunteers have undertaken bush restoration work to restore and enhance the natural beauty of this area and the adjacent Bluff.
- Start of the regionally significant Two Valley Trail would be dominated by a sheer rock wall on one side of a narrow passage, and the slab, tanks and pipework on the other.
- The enjoyment of many hundreds of walkers from all over the Sydney Basin and beyond will be affected for generations to come.

WCPS has requested that Sydney Water consider alternative options for the placement of this unit.

**We need members to write letters to show that people do value this bushland  
Please stress the significance of the Wollibuff Creek Valley and the walking track to you personally**

Letters outlining your concerns can be sent to either our local member, Sophie Cotsis or to the Minister. Ms Sophie Cotsis, MP [canterbury@parliament.nsw.gov.au](mailto:canterbury@parliament.nsw.gov.au)  
Melinda Pavey, MP, Minister for Water, Property and Housing through an online submission form. [www.nsw.gov.au/your-government/ministers/minister-for-water-property-and-housing/](http://www.nsw.gov.au/your-government/ministers/minister-for-water-property-and-housing/)

Gina Svolos  
President WCPS



Adam McKeown CSIRO



Flying Fox National Science Foundation



Deb Little

## WOLLI FLYING-FOX CAMP GONE QUIET

**Much to the surprise of many people who regularly walk along the TVT bush track between Girrahween Park and Turrella Reserve, the Wollli Grey-headed Flying-fox camp is currently unusually quiet. Used to hearing their noisy chatter, walkers reported that the camp rapidly emptied in early June.**

The last time this happened was April-May 2016, when there was a mass flowering of Spotted Gums (*Eucalyptus maculata*) on the south coast of NSW. Then it was thought that over 40% of the entire Grey-headed Flying-fox population was feeding and roosting within 20 kms of Batemans Bay.

GHFF are a highly mobile species, and move in response to food availability and seasonality, They often travel hundreds of kilometres.

Winter can be a particularly hard time for them in their southern range, as there are fewer of their significant food trees flowering and providing them with nectar and pollen. Eucalyptus species are particularly important. In winter, the more productive areas food-wise tend to be the coastal and inland slopes in south-east QLD and northern NSW. Eucalyptus trees are also notorious for flowering irregularly and having variable nectar production, depending on climatic conditions. With such tricky food resources, who would be a GHFF?

In recent months there have been reports of good flowering of White Box (*Eucalyptus albens*), in particular in the Hunter and Central west areas of NSW. Many GHFF have been present in those areas as a result. Who knows, some might be from Wollli. Other Sydney camps have also emptied this winter.

While we have had an unusual nil result for our monthly populations counts in June, July and August this year, we expect the GHFF to be back soon as the spring flowering in the Sydney area begins. Females also will start to give birth from mid September on.

We will resume our monthly counts as soon as they return.

New counters or just “watchers” are always welcome on the 3rd Friday of each month.

Just email [bats@wollicreek.org.au](mailto:bats@wollicreek.org.au) for more info.

Deb Little  
Bat Co-ordinator

When was the last time  
you got in a kayak?

SATURDAY 30 NOVEMBER and 14 DECEMBER  
**GUIDED KAYAK TRIPS UP WOLLI CREEK**

Email [info@wollicreek.org.au](mailto:info@wollicreek.org.au) to register  
Numbers are limited so don't leave till too late

# BIODIVERSITY MONTH

## GUIDED KAYAK TRIPS

## WALKS IN THE WOLLI CREEK VALLEY

This spring the **Wolli Creek Preservation Society** are partnering  
with **Canterbury Bankstown Council**  
to host two walks in the Wolli Creek Valley

For further information contact [info@wollicreek.org.au](mailto:info@wollicreek.org.au)

### WOLLI CREEK VALLEY – FULL TRACK WALK

SUNDAY 22 SEPTEMBER 2019 8:00–12:30

This walk will be a 5km walk through bushland, parkland and riverside from Bexley North to Tempe via the Wolli and Cooks River Valleys. The walk will showcase some of the best preserved bushland in the local area, highlighting sandstone cliffs, tall gum trees, river views and birdlife.

This is a medium-hard grade 5km walk with some sections of the trail covering uneven ground.

Bookings are required and all children under 18 years must be accompanied by an adult.

Bookings are available through Eventbrite

[eventbrite.com.au/e/biodiversity-month-wolli-creek-full-walk-tickets-67410274947](https://eventbrite.com.au/e/biodiversity-month-wolli-creek-full-walk-tickets-67410274947)

See also [www.wollicreek.org.au/biodiversity-month-walks-in-the-wolli-creek-valley](http://www.wollicreek.org.au/biodiversity-month-walks-in-the-wolli-creek-valley)





## WOLLI CREEK VALLEY – BARDWELL PARK TO TEMPE

SATURDAY 26 OCTOBER 9.00-12.00

The 3.5km walk will showcase some of the best preserved bushland in the local area, highlighting sandstone cliffs, tall gum trees, river views and birdlife. The Wollie Creek is also home to one of Sydney's Grey-headed Flying Fox colonies. This walk provides an amazing opportunity to see them in their natural habitat.

This is a medium grade walk with some sections of the trail covering uneven ground.

Bookings are required and all children under 18 years must be accompanied by an adult.

Bookings are available through Eventbrite

[eventbrite.com.au/e/biodiversity-month-wollie-creek-river-walk-tickets-67407747387](https://eventbrite.com.au/e/biodiversity-month-wollie-creek-river-walk-tickets-67407747387)

### WALKING ADVICE

- Please advise us before we start of any restrictions on your mobility or anything else we might reasonably need to know to ensure your safety. Please alert us immediately to any accidents or injuries that occur during the walk.
- The walk is almost entirely on unmade and uneven surfaces. It is mostly level, easy walking. However there are some ascents and descents, particularly the rocky walk up and down Nannygoat Hill, but this is optional. You need to wear stout walking boots or shoes, with a good gripping sole – sandals and thongs are absolutely not good enough.
- The path is overhung by vegetation in places and long trousers and sleeves are advisable to avoid scratches.
- Please bring plenty of water and a snack.
- Much of our walk will be well shaded, but a broad-brimmed hat may still be advisable.
- This is a relatively low-risk walk, but care is always needed and we rely upon your prudence and caution. We also ask you to assist the walk leaders in ensuring the complete safety of the whole group.

Gina Svolos, WCPS President



**THE JUNE WINTER WALK FROM BEXLEY NORTH**

led by Gina, Tim and Laura

Illoura Reserve

Western end of the track

At the cliffs

# POSITIONS VACANT

## COMMITTEE MEMBERS AND MEMBERSHIP SECRETARY

### Do you share our passion for the Wollie Creek Valley and would like to make a difference?

Come join us in helping to manage the Wollie Creek Preservation Society and keep up the tradition of being a proactive group keeping an eye out for this amazing bushland. We are a totally volunteer community-based organisation and really need your help to keep doing what we do so well.

Our management committee is seeking new members and is keen to hear from people who might be interested. Meetings are held every two months. This is an active committee whose activities include organising events, walks, financial management, newsletters and keeping our membership and local community informed through our website and social media. Most importantly, we also continue to advocate to government to help protect the Wollie Creek Valley.

No prior experience is needed, but if you do have a particular interest, or have experience, even better.

### MEMBERSHIP SECRETARY

We are also looking for a membership secretary to help us welcome new members, keep our database up to date and ensure our members are informed about our events and activities through regular emails. You would also mail out this Update to members four times a year.

There are also other activities where we need help from time to time. Please contact our President, Gina Svolos, if you would like further details on what's involved. Email [info@wolliecreek.org.au](mailto:info@wolliecreek.org.au) or phone 0431308303 to discuss.



**PREVIOUS WCPS MEMBERSHIP SECRETARIES**

Derryn, Peter and Tim

## MEMBERSHIP

Family One Year \$15

Individual One Year \$10

Concession \$7

Group Membership \$30

Direct Deposit Westpac BSB 032 067

WCPS Inc 288295, with your  
SURNAME and RENEW in  
the description line

Email [membership@wollicreek.org.au](mailto:membership@wollicreek.org.au) to  
confirm years and any donation included

## WCPS T-SHIRTS

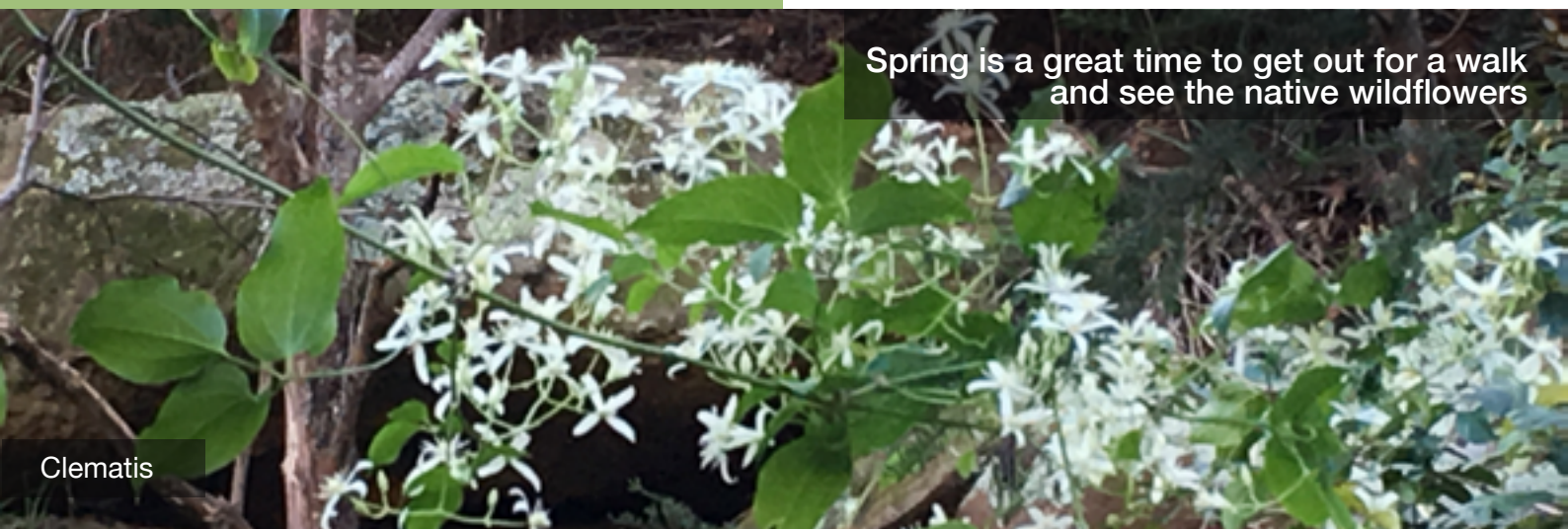
If you would like a t-shirt  
please let us know

T Shirts are \$25 each  
Short and long sleeved



The order form is available at  
[WCPS-T-shirt-Order-Form.pdf](#)  
or via our website/ About Us/ Support Us

We will be printing as soon as we have sufficient  
orders to make it financially viable.



Clematis

Spring is a great time to get out for a walk  
and see the native wildflowers



Hibbertia



Pandorea



Leucopogon lanceolata flowering by the Girrahween Track

# CALENDAR

<b>Bush Regeneration</b>	September 7, 8, 11, 20, 21 October 5, 9, 13, 18, 19 November 2, 10, 13, 15, 16 December 7, 8, 11, 20, 21 Details via <a href="mailto:bushcare@wollicreek.org.au">bushcare@wollicreek.org.au</a> , website calendar or phone Georgina on 9957 2284. Always check in case of changes at short notice.
<b>Bat Counting</b>	<b>Generally, third Friday of each month, just after sunset</b> <b>Currently no bats in the camp over winter</b> For up-to-date details, join the bat group email list by contacting <a href="mailto:bats@wollicreek.org.au">bats@wollicreek.org.au</a> and come along to see the fly-out or join in the counting
<b>Bird Surveys</b>	<b>Teams are doing regular monthly surveys of bird species and numbers present</b> They work to their own timetable, but we can get you involved on a team if you contact <a href="mailto:birds@wollicreek.org.au">birds@wollicreek.org.au</a>
<b>Committee Meetings</b>	September 23 November 25 Inner south-west CDF, suite 1, Ground Floor, 11–13 Hartill-Law Avenue Bardwell Park. All members are welcome to attend the meetings, but notification to WCPS is essential due to security at the building.
<b>Planning Meeting</b>	Usually held once a year in February. Community Development Forum offices, Ground Floor, 11–13 Hartill-Law Avenue Bardwell Park.
<b>Guided Walks and Kayak Trips</b>	Walks Sun Sep 22 and Sat Oct 26 8-12.30 Kayaks Sat Nov 30 and Dec 14 <a href="mailto:info@wollicreek.org">info@wollicreek.org</a>

**EDITOR & LAYOUT: LAURA ZUSTERS**  
All photos by Laura unless otherwise credited

Wolli Creek Preservation Society  
PO Box 270 Earlwood NSW 2206  
[info@wollicreek.org.au](mailto:info@wollicreek.org.au)  
[www.facebook.com/protectwollicreekvalley](http://www.facebook.com/protectwollicreekvalley)  
[www.wollicreek.org.au](http://www.wollicreek.org.au)  
[twitter.com/wollipossum](https://twitter.com/wollipossum)  
[youtube.com/user/wollicreekvalley/videos](https://youtube.com/user/wollicreekvalley/videos)

