



Wolli Creek Preservation Society

# Update

July 2020

1. *Discovering the Neighbourhood*
2. *Make a Difference Today*
3. *Save Wolli Bluff*
4. *Jackson Place Remediation*
5. *Bird Surveyors Needed*
6. *Bushcarers Keeping Safe*
7. *Bat Count Back in Business*
8. *Coming Up Fungi Foray*
9. *Winter Walks and Wildflowers*
10. *T Shirts and Membership Info*
11. *Calendar of Upcoming Events*

## DISCOVERING THE NEIGHBOURHOOD



Judy at her cottage in historic Jackson Place

During the last few months, as we all stayed home more and explored our local neighbourhoods, we have been so lucky to have Wolli Creek Regional Park at our doorstep. Local residents have certainly noticed a big increase in walkers coming from Cooks River, Tempe, Arncliffe and of course Earwood.

Judy Finlason, a familiar sight for many people walking the Jackson Track, says, "I've met so many families coming through, who have never been to the Valley before. Many of them are amazed that the Valley even exists. When I tell them a bit about the history of the Valley, they want to know more!"

**Anyone have ideas on how to encourage these new visitors to the Valley to sign up and become members of WCPS?**



# Wolli Creek Update

From the Wolli Creek Preservation Society Inc.

No.5 October 1988

## SUPPORT THE DMR'S TUNNEL OPTION

The battle is no longer just one of getting trucks off our roads and maintaining our open space; it is now one of saving homes!

The DMR has released its options paper for the F5 freeway and called for comments from residents -

Only one DMR option is acceptable - the tunnel option (B5). This has least impact on properties, and preserves the small supply of open space in inner southern Sydney. The destruction of homes and quality of life involved in the other options is utterly unacceptable.

through the Rockdale municipality or along Homer and William Streets. **They involve unacceptable destruction of homes and must be rejected.**

The options over or next to the East Hills Line would prevent expansion of public rail transport in the future.

The DMR believes that the tunnel satisfies their objectives and has "high benefits".

### WHAT YOU CAN DO -

1. Fill in the comment form which is included in the DMR's options paper (if you haven't already got one they are available from Rockdale Council). Under Question 4

### What is the tunnel option (B5)?

## We Made a Difference Before MAKE A DIFFERENCE TODAY

The Wolli Creek Preservation Society was formed in 1984 to protect the Wolli Creek Valley from the planned construction of an eight lane M5 motorway through the middle of the Valley.

We continue to protect the Valley from ongoing threats and look after the environment of the Valley. Our members continue to be critical to maintaining our ability to do this. The more members we have, the more we can influence decisions that affect the Wolli Creek Valley.

Join or renew your Wolli Creek Preservation Society membership. For \$10 a year for individuals and \$15 for families, not only will you receive details about upcoming activities, events and campaigns, you will also receive our newsletter, the Wolli Creek Update, and get priority access to our member walks and other events. For further details visit [http://www.wollicreek.org.au/about\\_us/support\\_us](http://www.wollicreek.org.au/about_us/support_us)

We thank all of you who continue to support the WCPS through your membership. Some of you may have received a call from one of our committee members to remind you to renew your membership for 2020. Thank you for taking our calls and for paying your membership fees. If you still need to do this, please do so soon so that we can continue to be effective in protecting the valley. Don't forget to let us know when you have paid your membership by sending an email to [info@wollicreek.org.au](mailto:info@wollicreek.org.au).

Gina Svolos  
WCPS President

If you happen to talk to some of the many new walkers and exercisers in the Valley during the Pandemic, maybe you can persuade them to help protect this beautiful place by joining. Members are critical to our ability to protect the Wolli Creek Valley.



Wolli Bluff at Unwin St Earlwood

## HELP SAVE WOLLI BLUFF FROM PROPOSED ODOUR CONTROL UNIT

We are currently fighting to stop plans to build a Sydney Water Odour Control Unit at the Tempe end of the walking track through the Valley. This is the eastern gateway to Wolli Creek Regional Park. Construction of the Odour Unit will close the walking track for up to 12 months while it is built. The current construction that is planned will cut into Wolli Bluff and forever destroy the environs of this beautiful area.

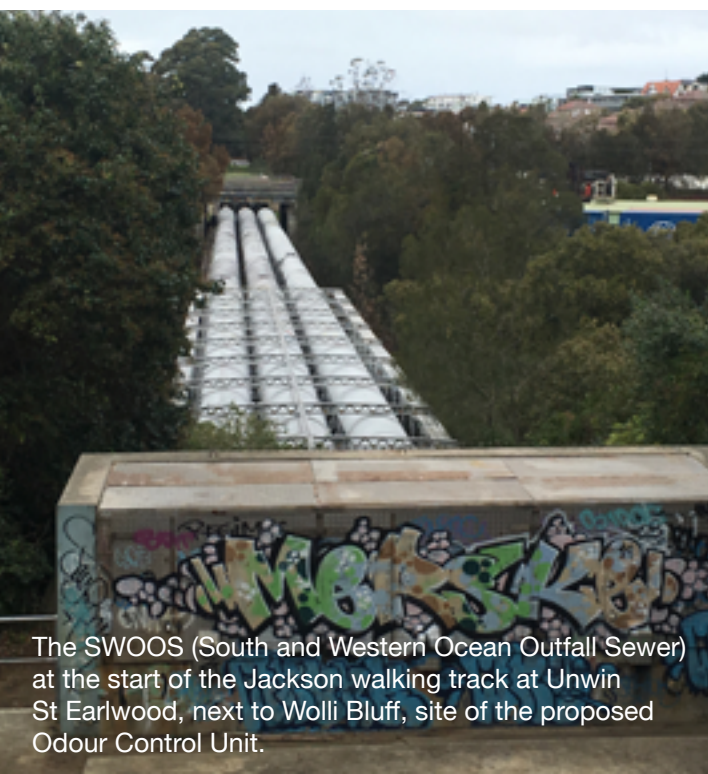
Any support or ideas you have may help us in this fight. Please don't hesitate to contact us. We don't have much time. Construction is due to start later this year.

We have recently been talking with the National Parks Association and the Nature Conservation Council to consider further representation to the Minister for Water, Property and Housing to oppose this unit. We are discussing other options to have these plans reconsidered, to avoid affecting the natural environment of this area.

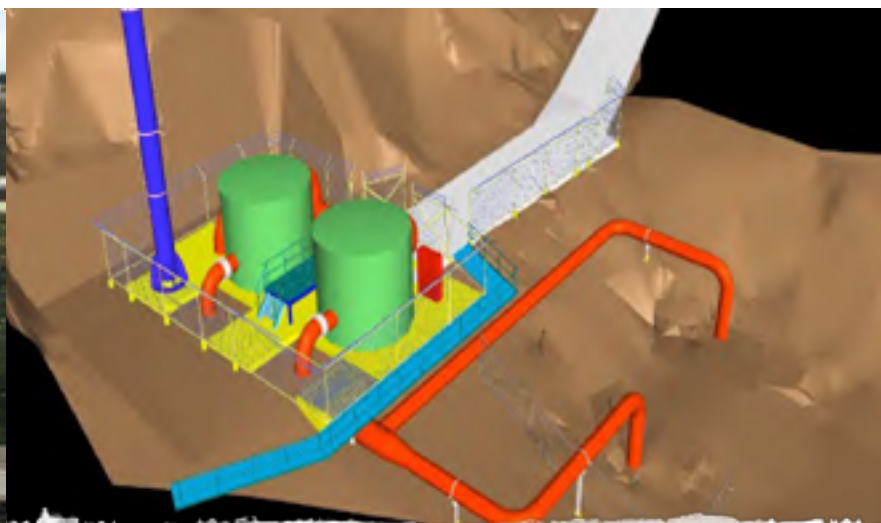
For background information on this issue please see  
<http://www.wollicreek.org.au/wolli-bluff-under-threat-action-needed>

Gina Svolos  
WCPS President

Sydney Water proposal for Odour Control Unit October 2019



The SWOOS (South and Western Ocean Outfall Sewer) at the start of the Jackson walking track at Unwin St Earlwood, next to Wolli Bluff, site of the proposed Odour Control Unit.



Tanks 3.5-4m high; slab 10m x 12m (originally 15m x 15m); vent (purple) 14m high (current stacks are 18m high – their bases are the start of the red pipes at right). TVT cantilevered walkway shown in blue – TVT section closed for 9-12 months during construction. Stack is hard against rockface of Wolli Bluff, which will be cut into. New roadway (in grey) runs from Unwin St turning circle. Construction start aimed for late 2020.

## JACKSON PLACE REMEDIATION

# COMPLETION OF REGIONAL PARK ONE STEP CLOSER

In 1998, after its decision not to build a surface road through the valley, the NSW State Government announced it would establish a Wollie Creek Regional Park, under National Parks and Wildlife Service (NPWS) management.

By February 2017 about 46 of the 50 hectares assigned to the Park were handed over to NPWS as manager of the Park. A crucial parcel of land (approx 1.8 hectares) on the southern side of Jackson Place, across the road from the sandstone cottages, is yet to be transferred by Roads and Maritime Services (RMS) to NPWS. Previous studies of this land have shown a low level of contaminants in the soil due to illegal dumping of building materials during the 1920's to 1950's.

The RMS has finally lodged a DA for remediation works with Council, using the 'capping' method to remediate the site to ensure there are no health or environmental risks in the future - a major development that has been long awaited.

The works will cause significant disruption in the short term, but the remediation is critical for the completion of the Regional Park and when landscaped should be a big improvement to the site.

Jackson Place with its 100 year-old sandstone cottages, links to Chinese market gardens and sandstone quarries of the past, is an important part of the fascinating history of the Wollie Creek Valley.

Jackson Place residents and WCPS have been involved in many meetings with government authorities about the land over the years and will be making a submission on the EIS to Council on behalf of WCPS and residents.

Judy Finlason





Want to help out and learn to survey birds in the Valley?  
Contact [birds@wollicreek.org.au](mailto:birds@wollicreek.org.au)

## BIRDOS SURVEYS LOOKING FOR NEW SURVEYORS

### A Great Excuse To Get Out In The Bush Once A Month

Wolli Birdos have 9 active sites in the Valley, with teams doing regular monthly surveys – on the Western Track near Bexley, Illoura Reserve, Bray Ave Wetlands, Fauna St, Girrahween Track, Coolabah Reserve and Undercliff Track.

However, the sites at Stotts Reserve and Nannygoat Hill have only one surveyor each. Waterworth Park and Bardwell Quarry have none, so no surveys are happening at all.

Our regular bird surveys are a great Citizen Science project to get involved in. Most members started by tagging along with others who knew about birds and quickly learnt to recognise the look and calls of key species in the Valley. Survey data is uploaded into the Citizen Science 'Atlas of Living Australia' database, to add to the valuable ongoing records of birds in the Valley, started by Neil Rankin in the 1960s.

Dorothy Luther, Database wrangler for Wolli Creek Birdos, says,

“Surveyors may not realise that their data is combined with surveys from all over the world for research. If you look at <https://collections.ala.org.au/public/show/dp39>, you will see that our data is particularly helpful to those performing ecological research, environmental assessment and educational purposes, among others.

In the last 12 months alone, our data has been accessed for 367 research projects (events). When Universities are back at work, I'm hoping to get some students to do specific research on our data to look at the changes over time, eg the impact of the recent drought.”





Banksia ericifolia at Bray Ave



Sue Kennedy at Bray Ave Wetland

## BUSHCARERS KEEPING SAFE

After what seems like a long pause, Bushcare sessions started again in June. Bushcarers at the Bray Ave Wetlands were postponed due to rain two Sundays in a row but are glad to be back in the bush again. Sue Kennedy has been missing getting her hands dirty in the bush and tracking down Erharta.

**“I’m a keen bushcarer. I usually come to the Bray Ave Wetlands, Paperbark Creek and Undercliffe sites. I often work at Stotts as well. So, it’s great to be back out here now and doing some weeding, especially after it’s been raining and the weeds are out in force.”**

There will be some changes that bushcare groups will need to adhere to, and not everyone may feel it’s time to return, but it seems good to give it a try.

There will be a maximum of 10 people to each site, and groups will not be able to accept new participants for the time being, only those who have already attended Bushcare.

Participants must all bring our own morning tea, cups and snacks, so there is no common handling of food and utensils. They will need to bring their own gloves and keep a good distance from each other, especially during morning tea.

If you have any queries, then please do contact me. We will let members know when bushcare groups are open to new members again. If you’re keen to give it a try and get involved, please get in touch with me.

**Georgina San Roque**  
**Bushcare Co-ordinator**  
 Wollie Creek Preservation Society  
 bushcare@wolliecreek.org.au



Bat Counter Chantel



Bat Counters Juan and Susannah

## BAT COUNT BACK IN BUSINESS

It was a cool clear Friday sunset, down in the coldest part of Turrella Reserve and seven of us were keeping our distance and counting Grey-headed Flying Foxes as they were flying out to the north. Several others were based at Coolibah and Ron Gosling Reserves to sight the bats to the south, as they flew out to spend a night looking for food.

Chantel had contacted the Society a few months ago, because she'd come across a sound dispersal unit blaring at the camp, while walking in the bush. Through us, she reported it to National Parks, who suspected that it was a local resident hoping to disturb the bat camp. The unit has been removed. Unfortunately, those residents may not understand how important Flying Foxes are to the Australian bush, as Australia's most important long-distance pollinators.

**"I have always been into bats, but didn't know the Wolli Creek group was here, counting every month. I live in Dulwich Hill, so it's easy for me to bicycle over once a month. I love native animals. I am now doing a WIRES wildlife course, so that I can learn to look after injured wildlife."**

Bat numbers are low, because it's winter and food is scarce and many bats have moved elsewhere to look for food. Our total for the fly-out count was 4,950, down from last month's count of 10,500. Juan recorded all our counts at the end of the night, in spite of a wrist injury. Because of his accident, Juan hadn't been to a count since October.

**"I've been coming for four years and I've really missed it the last few months. Every time I don't come, I regret it. It's my favourite thing to do every month."**

Susannah was here last time in March. **"It's really nice to be back doing this. Nature is fascinating. We don't have fly outs like this in Germany. This is really special."**

**If you'd like to see a nice success story about a rescued Flying Fox pup,  
have a look at [Meg Church's Youtube video](#)**



Waxcaps - *Hygrocybe aurantipes*, Dave Noble



*Hygrocybe cheelii*, Dave Noble

## COMING UP NEW FUNGI FORAY SATURDAY JULY 25

The Sydney Fungal Studies Group is mad keen about all things fungi in the Sydney Region and will be conducting another informative survey of the Wollie Creek Regional Park in July

The Sydney Fungal Studies Group conducted a fungal survey of the Valley on 13 June. To see just how many species they found, have a look at Dave Nobles' post on the very active [Fungi of the Sydney Region facebook page](#). Or have a look at [Dave's excellent blog](#). Thanks for your beautiful photos David.

### Here's Valerie Atkinson's report on June's Foray

As kids growing up on the Lachlan out west, in spring in a good year, we'd spread across a paddock with our knives and billies picking mushrooms, avoiding toadstools. I knew the edible ones. This was the sum-total of my knowledge until I joined a Fungi Survey on the Wollie Creek and then a second one on 13th June.

With David Noble's foraging sub-group, we checked out likely spots around Paperbark Creek and those turpentine trees there. Someone would find a suspect and call Dave, who was authorized to collect.

While still safe-distancing we gravitated to a well-camouflaged lump resembling dung or a purple twig or some other odd shape. They all turned out to be fungi! When we reassembled at Girrahween Park our hauls were laid out on a picnic table.

So many varieties, colours and shapes totally covered that table, 54 species in all, collected from just a few locations in a couple of hours. Following analysis, name tags were added.

Then the experts in mycology, including Dr Ray Kearney and his wife Elma Kearney, amateur fungi enthusiasts, citizen scientists and renowned Australia-wide, summarised the finds.

**"To appreciate the astonishing intricacy and beauty of what we found, do look up Dave's macro-photography on the links above."**

If you would like to come along and learn about hidden treasures of the forest in July, contact [info@wolliecreek.org.au](mailto:info@wolliecreek.org.au).





THE WILDFLOWERS ARE ALREADY COMING OUT  
SO WHY NOT HEAD OUT SOON FOR A  
**WINTER BUSHWALK**



*Acacia suaveolens*



*Acacia ulicifolia* - Prickly Moses



*Pterostylis nutans* - Nodding Orchid



*Leucopogon lanceolatus*

## MEMBERSHIP

Family One Year \$15

Individual One Year \$10

Concession \$7

Group Membership \$30

Direct Deposit Westpac BSB 032 067

WCPS Inc 288295, with your

SURNAME and RENEW in

the description line

Email [membership@wollicreek.org.au](mailto:membership@wollicreek.org.au) to confirm years and any donation included

## WCPS T-SHIRTS

If you would like a t-shirt please let us know



T Shirts are \$25 each  
Short and long sleeved

The order form is available at  
[WCPS-T-shirt-Order-Form.pdf](#)  
or via our website/ About Us/ Support Us

We will be printing as soon as we have sufficient orders to make it financially viable.

# CALENDAR

<b>Bush Regeneration</b>	July 4, 8, 12, 17, 18, (25) August 1, 9, 12, 14, 15, (22) Details via <a href="mailto:bushcare@wollicreek.org.au">bushcare@wollicreek.org.au</a> , website calendar or phone Georgina on 9957 2284. Always check in case of changes at short notice.
<b>Bat Counting</b>	Generally, third Friday of each month, just after sunset  For up-to-date details, join the bat group email list by contacting <a href="mailto:bats@wollicreek.org.au">bats@wollicreek.org.au</a> and come along to see the fly-out or join in the counting
<b>Bird Surveys</b>	Teams are doing regular monthly surveys of bird species and numbers present They work to their own timetable, but we can get you involved on a team if you contact <a href="mailto:birds@wollicreek.org.au">birds@wollicreek.org.au</a>
<b>Committee Meetings</b>	July 27, September 28, currently held online via Zoom Inner south-west CDF, suite 1, Ground Floor, 11-13 Hartill-Law Avenue Bardwell Park. All members are welcome to attend the meetings, but notification to WCPS is essential due to security at the building.
<b>Planning Meeting</b>	Usually in February Community Development Forum offices, Ground Floor, 11-13 Hartill-Law Avenue Bardwell Park.
<b>Guided Walks and Surveys</b>	Possible Walk October TBA Fungi Foray Saturday 25 July Numbers are limited <a href="mailto:info@wollicreek.org">info@wollicreek.org</a>

EDITOR & LAYOUT: LAURA ZUSTERS

All photos by Laura unless otherwise credited

Wolli Creek Preservation Society  
PO Box 270 Earwood NSW 2206  
[info@wollicreek.org.au](mailto:info@wollicreek.org.au)  
[www.facebook.com/protectwollicreekvalley](http://www.facebook.com/protectwollicreekvalley)  
[www.wollicreek.org.au](http://www.wollicreek.org.au)  
[twitter.com/wollipossum](https://twitter.com/wollipossum)  
[youtube.com/user/wollicreekvalley/videos](https://youtube.com/user/wollicreekvalley/videos)

